

KS-TRAIN Emergency Readiness Partnership



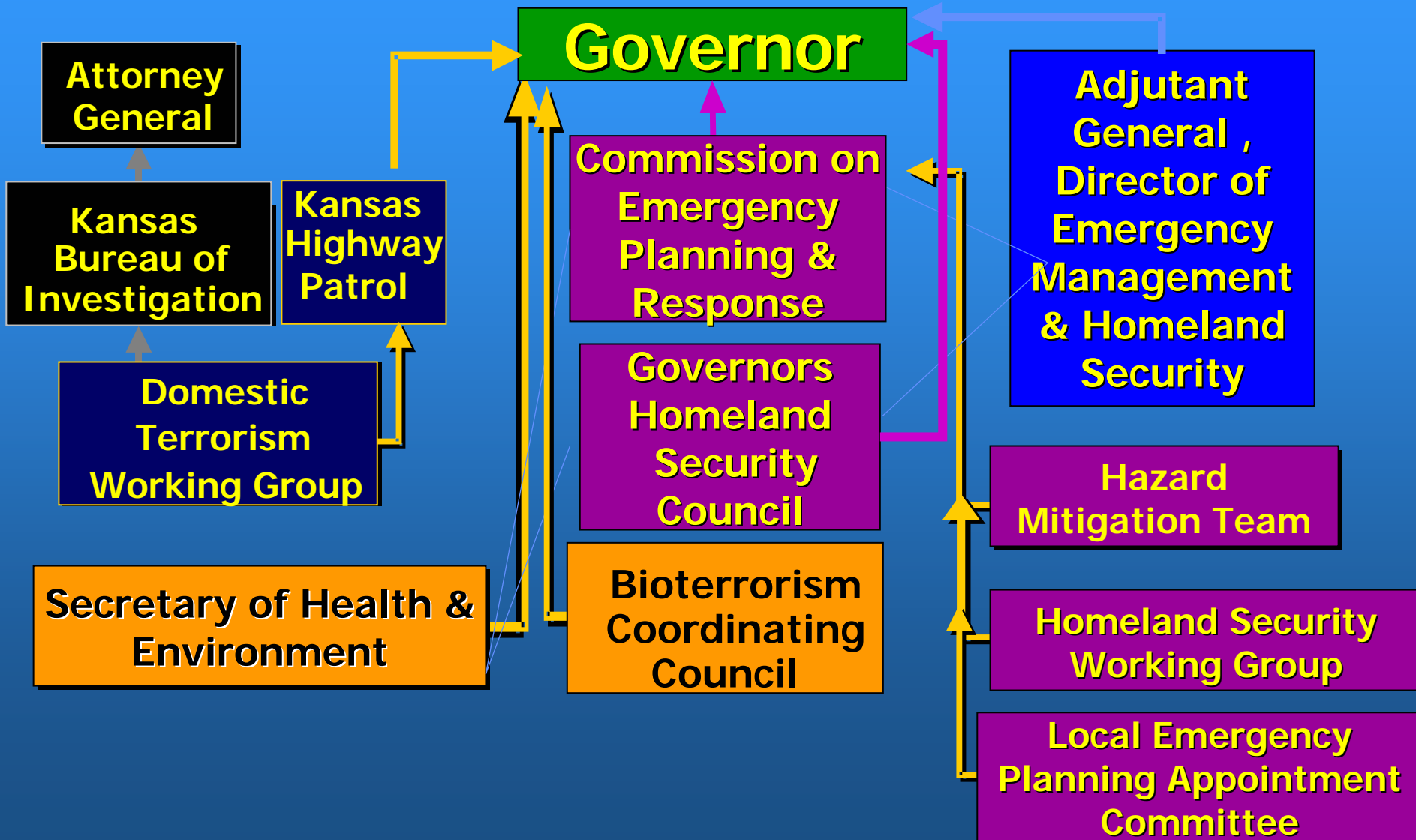
- ◆ **History**
 - Right place at the right time
 - KDHE KS-TRAIN Advisory Committee

- ◆ **Funding**
 - CDC BT training funds
 - ODP

- ◆ **Marketing**
 - Create courses and they will come
 - Course provider, learner, administration

- ◆ **Partnership Structure**
 - 11 ODP First Responder/Receiver groups
 - STAT (State Training Activity Team)
 - Shared responsibilities, e.g. course server storage, learner training, course development...

Kansas Homeland Security



KS "Super" TRAIN

- ◆ **PHF contract for enhancements/customization:**
 - Super Calendar
 - Revision of KS-TRAIN Main Page and Registration Process
 - New Grouping Structure
 - Customization of Data Fields
 - Mailing Label Features and Sign in Sheets
 - Email Utility Function
 - Wait List
 - Blended Learning (in collaboration with PHF)
- ◆ **Partners Current Involvement with KS-TRAIN**
 - "On Board", Kansas Homeland Security, Kansas Division of Emergency Management, Kansas Fire Marshall's Office, Kansas Department of Health and Environment
 - "Getting a Ticket", Kansas Department on Aging, Kansas University, Health Care Community
 - "TRAIN Watchers", Law Enforcement and Fire Training Academies, Kansas Emergency Medical Services.....